

BB&T FINANCIAL PLAZA

41 W I-65 Service Road N

Mobile, AL

BDG
Burton
PROPERTY GROUP



- 1,375 - 3,400 Square Feet of Space Available
- Four Level Class A Office Building located off I-65
- Tenants include BB&T, Wells Fargo, Wilkins Miller and Burton Property Group
- On-Site Management, Bank and Restaurant
- Amenities include Courtesy Officer, After Hours Key Card Access, Utilities, Janitorial and Dry Cleaning Services

leasing@burtonprop.com • 251-380-7241

AERIAL

SPRINGHILL VILLAGE



BB&T FINANCIAL PLAZA



DAUPHIN SQUARE



LEGACY VILLAGE



SPRINGHILL COLLEGE
1,700 STUDENTS, FACULTY AND STAFF

SPRINGHILL MEDICAL CENTER
252 BEDS



BB&T FINANCIAL PLAZA

MOBILE, ALABAMA



Burton
PROPERTY GROUP

COMMERCE MAP

DISTANCE TO CENTERS OF COMMERCE & TRANSPORTATION

- ON INTERSTATE 65
- 4 MILES TO INTERSTATE 10
- 10 MINUTES TO MOBILE AEROPLEX, AIRBUS & UNIVERSITY OF SOUTH ALABAMA BROOKLEY
- 12 MINUTES TO DOWNTOWN MOBILE, MOBILE CONVENTION CENTER, RSA TOWER, MOBILE GOVERNMENT PLAZA & PORT OF MOBILE
- 20 MINUTES TO MOBILE REGIONAL AIRPORT



AMAZON DISTRIBUTION CENTER

WALMART DISTRIBUTION CENTER

PROPERTY

RSA TOWER
DOWNTOWN MOBILE
MOBILE GOVERNMENT PLAZA
PORT OF MOBILE
MOBILE CONVENTION CENTER

AIRBUS



BB&T FINANCIAL PLAZA

MOBILE, ALABAMA

BPG

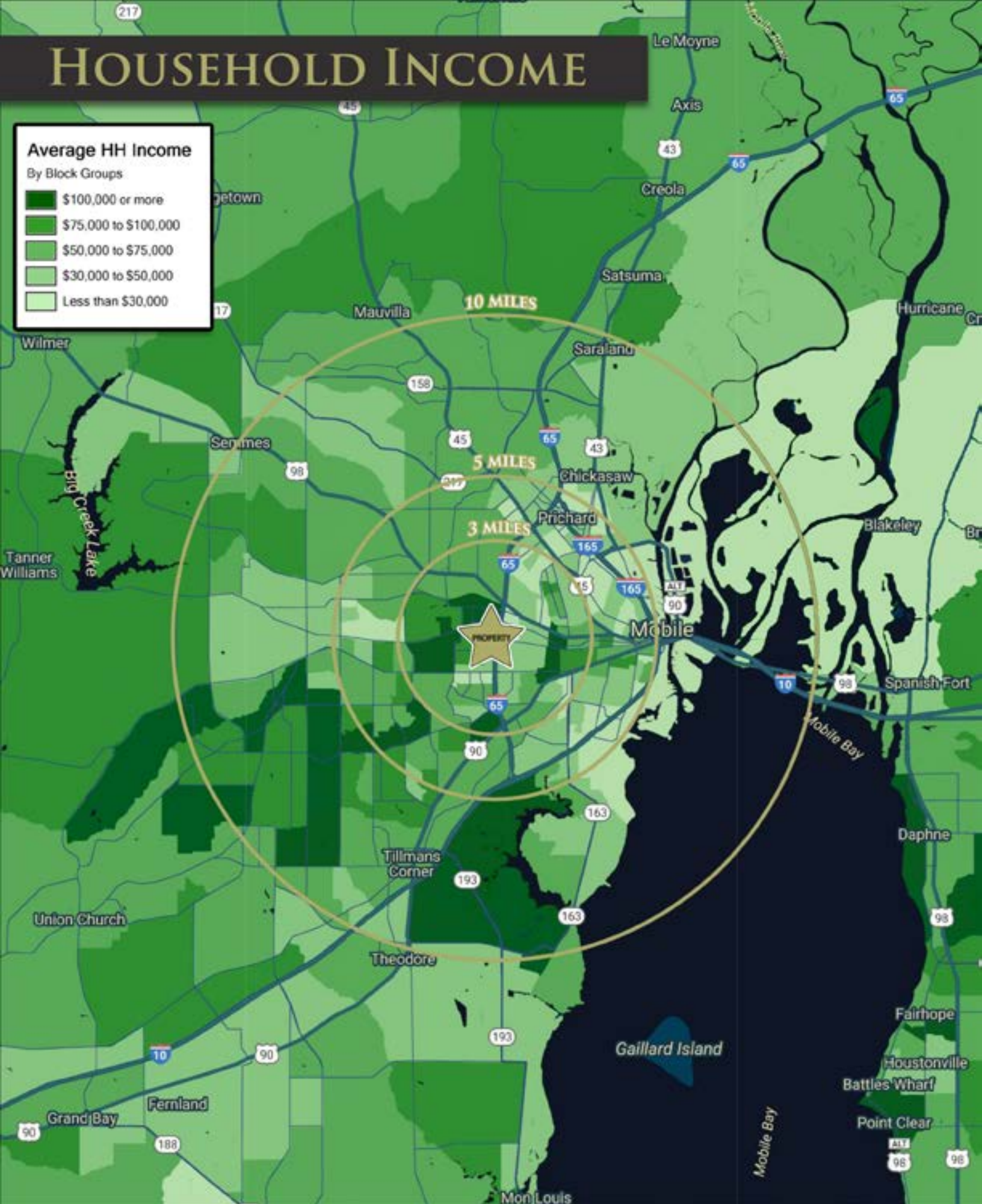
Burton
PROPERTY GROUP

HOUSEHOLD INCOME

Average HH Income

By Block Groups

- \$100,000 or more
- \$75,000 to \$100,000
- \$50,000 to \$75,000
- \$30,000 to \$50,000
- Less than \$30,000



	3 mi radius		5 mi radius		10 mi radius	
Population						
Estimated Population (2017)	71,009		174,012		304,213	
Projected Population (2022)	71,840		178,839		308,995	
Census Population (2010)	71,306		176,220		298,415	
Census Population (2000)	72,876		190,244		299,993	
Projected Annual Growth (2017-2022)	831	0.2%	4,827	0.6%	4,782	0.3%
Historical Annual Growth (2010-2017)	-297	-0.1%	-2,208	-0.2%	5,798	0.3%
Historical Annual Growth (2000-2010)	-1,570	-0.2%	-14,024	-0.7%	-1,578	-0.1%
Estimated Population Density (2017)	2,512	<i>psm</i>	2,216	<i>psm</i>	969	<i>psm</i>
Trade Area Size	28.3	<i>sq mi</i>	78.5	<i>sq mi</i>	314.0	<i>sq mi</i>
Households						
Estimated Households (2017)	30,220		71,943		122,281	
Projected Households (2022)	31,485		76,168		128,048	
Census Households (2010)	29,808		71,421		117,199	
Census Households (2000)	29,931		74,558		115,180	
Projected Annual Growth (2017-2022)	1,265	0.8%	4,225	1.2%	5,767	0.9%
Historical Annual Change (2000-2017)	290	0.1%	-2,615	-0.2%	7,101	0.4%
Average Household Income						
Estimated Average Household Income (2017)	\$64,748		\$58,253		\$64,110	
Projected Average Household Income (2022)	\$77,315		\$67,890		\$75,724	
Census Average Household Income (2010)	\$55,548		\$49,325		\$53,286	
Census Average Household Income (2000)	\$47,784		\$42,248		\$45,260	
Projected Annual Change (2017-2022)	\$12,567	3.9%	\$9,638	3.3%	\$11,614	3.6%
Historical Annual Change (2000-2017)	\$16,965	2.1%	\$16,004	2.2%	\$18,851	2.4%
Median Household Income						
Estimated Median Household Income (2017)	\$47,787		\$42,983		\$50,158	
Projected Median Household Income (2022)	\$56,117		\$50,139		\$58,425	
Census Median Household Income (2010)	\$41,254		\$37,155		\$41,826	
Census Median Household Income (2000)	\$33,869		\$30,742		\$34,728	
Projected Annual Change (2017-2022)	\$8,331	3.5%	\$7,156	3.3%	\$8,267	3.3%
Historical Annual Change (2000-2017)	\$13,918	2.4%	\$12,241	2.3%	\$15,430	2.6%
Per Capita Income						
Estimated Per Capita Income (2017)	\$27,778		\$24,395		\$26,046	
Projected Per Capita Income (2022)	\$34,103		\$29,217		\$31,652	
Census Per Capita Income (2010)	\$23,221		\$19,991		\$20,927	
Census Per Capita Income (2000)	\$19,582		\$16,529		\$17,328	
Projected Annual Change (2017-2022)	\$6,326	4.6%	\$4,823	4.0%	\$5,606	4.3%
Historical Annual Change (2000-2017)	\$8,195	2.5%	\$7,865	2.8%	\$8,718	3.0%
Estimated Average Household Net Worth (2017)	\$384,978		\$334,731		\$375,502	
Median Age						
	35.6		36.1		36.6	
Age 19 Years or Less	18,072	25.4%	44,492	25.6%	78,463	25.8%
Age 20 to 64 Years	41,514	58.5%	101,778	58.5%	178,344	58.6%
Age 65 Years or Over	11,423	16.1%	27,742	15.9%	47,406	15.6%
Daytime Demographics (2017)						
Total Businesses	5,316		9,519		15,018	
Total Employees	60,981		113,389		171,184	